

M-nuqshe : Ornated

N

Nahra : River
Nakhopta : Chaste, shy
Nasha : Man, person
Nimra : Tiger
Nqydha : Thin
Nura : Fire

P

Paghra : Body
Papa : Pope
Parcha : Piece of fabric
Pera : Fruit
Ph-hama : Understanding
Plyma : Bent, crooked, distorted
Prizla : Steel
Pyla : Elephant

Q

Qalama : Pen
Qalula : Quick, quickly
Qaryra : Cold
Qasra : Palace
Q-phyla : Locked
Qraya : Reading

R

Raba : Big
Raby : Teacher, professor
Raḥme : Mercy
Rapi : Shelf
Resha : Head
Rizza : Rice
Roma : Hill, height
Rqadha : Dancing

S

Sanduqa : Box
Ṣapra : Tomorrow
Saphori : Traveling
Sema : Silver
Sepa : Sword
Shamasha : Deacon, servant in the church
Shammama : Loveliest
Shamzyya : Watermelon
Shapyra, Shapyrta : Pretty (m/f)
Sh-ghysha : Troubled
Shimma : Name, noun
Shimsha : Sun
Shlama : Peace, hello

Sh-mayya : Sky, heaven
Shqol : Take
Shuqa : Market
Ṣipya (m), Ṣpytha (f): Clean, clear, pure
Sitwa : Winter
Smoqa : Red
Ṣoma : Lent
Sy : Go.

T

Tama : There, over there.
Talmydhi : Students, disciples.
Ṭaly : For me.
Tama : There, over there.
Ta maha : What for? Why?
Ṭawa : Good.
Tawirta : Cow.
Ṭera, ṭeri : Bird, birds.
Tora, Tori : Bull, bulls.
Tumra, Tumri : Date, dates.
Tumrana : The color of dates (brown).
Ṭura : Mountain.
Ṭyma : Value.
Ṭyna : Mud.

U

ʾUmra : Age.

W

W (Waw) : And.
ʾWadha : Act.
Waraqa : Paper.
Warda, Wardi : Flower, flowers.

Y

Yama : Sea.
Yarykha : Long.
Yimma : Mother.
ʾYlana : Tree.
Yoma : Day.
Yona : Dove.
Yulpana : Teaching.

Z

Zamara : Singer, singing.
Zanzryra : Starling (black bird).
Zawna : Time.
Zimmorta : Song.
Zmara : Singing.
Zorna : Flute

CHALDEAN LANGUAGE

ELEMENTARY COURSE

(2nd edition)

By Mar Sarhad Y. Jammo

A Chaldean Media Center Publication

(All rights reserved)

San Diego, California
2008

Appendix

A

'Alma : World
'Amuqa, 'Amuqta : Deep
Amyra : Prince

B

B (Beth) : In
Baba : Father
Bakhta : Woman, wife
Balaya : Calamity
Barayi : Outside
Bassyma (m), Bassymta (f) : Delicious or
Thank You
Batta : Duck
Behra : Light
Bera : Well (of water)
Betha : House
Brata : Daughter, girl
Brona : Son, child, boy
Brykha : Blessed
Buma : Owl
Bushala : Cooked food
Byza : Spilled

C

Chu mindy, chu nasha : Nothing, no man
(nobody)

D

D (Dalath) : Of
Dada : Dear kid
Dibba : Bear
Dunyi : World
Dyka : Rooster

G

Gabbara : Mighty
Ganawa : Thief
Garma : Bone
Garma D-Pyla : Bone of the Elephant
(ivory)
Garoma : Rolling pin
Gawayi : Inside
Gawra : Man, husband
G-dhadha : Thread
Gebid : Nearby
Gh-lyqa : Closed
Gubta : Cheese
Guda : Wall

Gumla, Gumli : Camel, camels
Gyana : Soul

H

Habbaba : Dearest
Haluya : Sweet
Hamam, Hammami : Bathroom,
bathrooms
Hayyu : Come
Hona : Mind
Honana : Mindful, intelligent
Hubba : Love

I

'Ilya : High

J

Julli : Clothes
Jwyni : Group

K

Kaka : Tooth
Kalba : Dog
Kaldaya : Chaldean
Karma : Vineyard, orchard
Kepa : Rock
Kha : One
Kimma : Mouth
Kinnara : Harp
Kirya : Short
Klyla : Crown
Koma : Black
Komta : Black (f)
Kosa : Hair
K-thawa Qad-dysha : Holy Book, Bible.

L

Leli : Night
Libba : Heart
Lushana : Tongue, language
Lyri : Coins

M

Malka : King
Malpana : Teacher
Mama : Mom
Maraqa : Gravy
Martyma : Valuable
Maya : Water
M-dhyta : City

3- Compose from the following words four meaningful combinations.

ܕܢܗܘܢܐ, ܕܢܗܘܢܐ, ܕܢܗܘܢܐ, ܕܢܗܘܢܐ,
ܕܢܗܘܢܐ, ܕܢܗܘܢܐ

4- Write down ten Chaldean nouns: five of animals and five of things.

5- Compose in Chaldean three meaningful combinations of words or short sentences.

ܕܢܗܘܢܐ ܕܢܗܘܢܐ!

Chaldean Language

Elementary Course

The Chaldean Alphabet

In the Aramaic Chaldean alphabet, there are 22 original consonants and 7 vowel marks. According to the classic Chaldean grammar, six of the consonants admit modification or alteration to produce six new consonants. In order to meet the needs of modern Chaldean, other modifications have been introduced for the sake of additional sounds. Here is, first, the list of the basic 22 consonants:

1- A = Alap	ܐ	=	ܐ	1
2- B = Beth	ܒ	=	ܒ	2
3- G = Gamal	ܓ	=	ܓ	3
4- D = Dalath	ܕ	=	ܕ	4
5- H = He	ܗ	=	ܗ	5
6- W = Waw	ܘ	=	ܘ	6
7- Z = Zayn	ܙ	=	ܙ	7
8- <u>H</u> = <u>H</u> eth	ܚ	=	ܚ	8
9- <u>T</u> = <u>T</u> eth	ܛ	=	ܛ	9
10- Y = Yodh	ܝ	=	ܝ	10
11- K = Kap	ܟ	=	ܟ	11
12- L = Lamadh	ܠ	=	ܠ	12
13- M = Mym	ܡ	=	ܡ	13
14- N = Nun	ܢ	=	ܢ	14
15- S = Simkath	ܣ	=	ܣ	15
16- ' = 'E	ܥ	=	ܥ	16
17- P = Pe	ܦ	=	ܦ	17
18- <u>S</u> = <u>S</u> ade	ܨ	=	ܨ	18
19- Q = Qop	ܩ	=	ܩ	19
20- R = Resh	ܪ	=	ܪ	20
21- Sh = Shyn	ܫ	=	ܫ	21
22- T = Taw	ܬ	=	ܬ	22

THE DESIGN OF THE CHALDEAN ALPHABET

- | | |
|------------------------------------------------------------------------------------------------------------------------------------------------------------------------------------------------------------------------------------------|---------------------------------------------------------------------------------------------------------------------------------------------------------------------------------------------------------------------------------|
| <p>↓ ↘ ↗ : 1 -12</p> <p>↘ ↙ ↗ : 2 -13</p> <p>↘ ↗ ↖ : 3 -14</p> <p>↘ ↗ ↖ : 4 -15</p> <p>↘ ↗ ↖ : 5 -16</p> <p>↘ ↗ ↖ : 6 -17</p> <p>↘ ↗ ↖ : 7 -18</p> <p>↘ ↗ ↖ : 8 -19</p> <p>↘ ↗ ↖ : 9 -20</p> <p>↘ ↗ ↖ : 10 -21</p> <p>↘ ↗ ↖ : 11 -22</p> | <p>↘ ↗ ↖ : 1 -1</p> <p>↘ ↗ ↖ : 2 -2</p> <p>↘ ↗ ↖ : 3 -3</p> <p>↘ ↗ ↖ : 4 -4</p> <p>↘ ↗ ↖ : 5 -5</p> <p>↘ ↗ ↖ : 6 -6</p> <p>↘ ↗ ↖ : 7 -7</p> <p>↘ ↗ ↖ : 8 -8</p> <p>↘ ↗ ↖ : 9 -9</p> <p>↘ ↗ ↖ : 10 -10</p> <p>↘ ↗ ↖ : 11 -11</p> |
|------------------------------------------------------------------------------------------------------------------------------------------------------------------------------------------------------------------------------------------|---------------------------------------------------------------------------------------------------------------------------------------------------------------------------------------------------------------------------------|

EXERCISES:

1- Select from the following vocabulary the correct matching word and place it on the right line to form a meaningful combination.

ܕܗܘܢܐ, ܕܗܘܢܐ, ܕܗܘܢܐ, ܕܗܘܢܐ.

- | | |
|--------------------|--------------------|
| <p>_____ ܕܗܘܢܐ</p> | <p>_____ ܕܗܘܢܐ</p> |
| <p>_____ ܕܗܘܢܐ</p> | <p>_____ ܕܗܘܢܐ</p> |
| <p>_____ ܕܗܘܢܐ</p> | |

2- Fill in the blank with a suitable Chaldean word of your own.

- _____ ܕܗܘܢܐ
- _____ ܕܗܘܢܐ
- _____ ܕܗܘܢܐ
- _____ ܕܗܘܢܐ
- _____ ܕܗܘܢܐ

This is the list of the 7 vowel marks:

Zqapa	وَقْفَا	-	اَ ، اِ ، اُ ، اِوْ	-1
Zlama	وَلَمَّا	-	اَ ، اِ ، اُ ، اِوْ	-2
P-thaḥa	فَتْحَا	-	اَ ، اِ ، اُ ، اِوْ	-3
Zlama kirya	وَلَمَّا كِيرَا	-	اَ ، اِ ، اُ ، اِوْ	-4
Waw rwyhta	وَوَّه رَوَّيْهْتَا	-	اَ ، اِ ، اُ ، اِوْ	-5
Waw 'y-qta	وَوَّه يْقْتَا	-	اَ ، اِ ، اُ ، اِوْ	-6
Yodh shlytha	وَيِّدْ شَلْيْهْتَا	-	اَ ، اِ ، اُ ، اِوْ	-7

- | | |
|---------------------------|--------------------------------|
| 1) Long a: aa, ba, ga, da | 4) Short e (i): i, bi, gi, di |
| 2) Long e: ae, be, ge, de | 5) Opened o: ao, bo, go, do |
| 3) Short a: a, ba, ga, da | 6) Closed o (u): u, bu, gu, du |
| | 7) Long y (ee): y, by, gy, dy |

Homework Exercise:

On the lines provided below, write each of the six modifiable letters and the additional modifications.

- | | | | | | | |
|-------|---|-------|-------|---|-------|-----|
| _____ | = | _____ | _____ | < | _____ | .1 |
| _____ | = | _____ | _____ | < | _____ | .2 |
| _____ | = | _____ | _____ | < | _____ | .3 |
| _____ | = | _____ | _____ | < | _____ | .4 |
| _____ | = | _____ | _____ | < | _____ | .5 |
| _____ | = | _____ | _____ | < | _____ | .6 |
| _____ | = | _____ | _____ | < | _____ | .7 |
| _____ | = | _____ | _____ | < | _____ | .8 |
| _____ | = | _____ | _____ | < | _____ | .9 |
| _____ | = | _____ | _____ | < | _____ | .10 |

LESSON ONE

In this first lesson, six consonants are introduced to you together with two vowel marks. The consonants are: Alap, Beth, Dalath, Lamadh, Mym, & Resh. The vowels are: the long 'a' & the short 'e' (i). The combination of the consonants with the vowel marks will form a few simple words.



-1 اَ ، اِ ، اُ ، اِوْ
-2 اَ ، اِ ، اُ ، اِوْ
اَ ، اِ ، اُ ، اِوْ

-3 اَ ، اِ ، اُ ، اِوْ
اَ ، اِ ، اُ ، اِوْ
اَ ، اِ ، اُ ، اِوْ

-4 اَ ، اِ ، اُ ، اِوْ
اَ ، اِ ، اُ ، اِوْ
اَ ، اِ ، اُ ، اِوْ

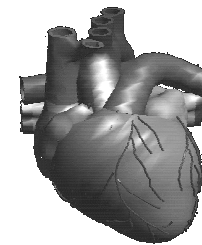
-5 اَ ، اِ ، اُ ، اِوْ
اَ ، اِ ، اُ ، اِوْ
اَ ، اِ ، اُ ، اِوْ

-6 اَ ، اِ ، اُ ، اِوْ
اَ ، اِ ، اُ ، اِوْ
* اَ ، اِ ، اُ ، اِوْ



VOCABULARY:

- Baba - Father
- D (Dalath) - Of
- Dada - Dear kid
- Dibba - Bear
- Libba - Heart
- Mama - Mom
- Raba - Big



Homework Exercise:

Combine the following two columns in a meaningful manner.

B	A
ܕܫܝܟܐ	ܟܝܚܝܢܐ
ܟܝܚܝܢܐ	ܡܕܝܝܢܐ
ܕܫܝܟܐ	ܩܠܐ
ܟܝܚܝܢܐ	ܟܝܝܐ
ܟܝܚܝܢܐ	ܝܡܝܢܐ

- _____ .1
- _____ .2
- _____ .3
- _____ .4
- _____ .5

LESSON TWO

In this lesson, three additional consonants are presented to you together with three more vowel marks. The three consonants are: Kap, Nun, & Shyn. The vowels are: the short 'a', the opened 'o' and the closed 'o'. The combination of these new letters and vowels, in addition to those taken in the first lesson, will enable us to form new Chaldean words.

-7 ܕ ܕ ܕ , ܕ ܕ ܕ , ܕ ܕ ܕ , ܕ ܕ ܕ .

ܕܕܕ , ܕܕܕ , ܕܕܕ , ܕܕܕ .

-8 ܕ ܕ ܕ , ܕ ܕ ܕ , ܕ ܕ ܕ , ܕ ܕ ܕ , ܕ ܕ ܕ , ܕ ܕ ܕ .

ܕܕܕ .

ܕܕܕ , ܕܕܕ , ܕܕܕ , ܕܕܕ , ܕܕܕ , ܕܕܕ .

-9 ܕ ܕ ܕ , ܕ ܕ ܕ , ܕ ܕ ܕ , ܕ ܕ ܕ , ܕ ܕ ܕ , ܕ ܕ ܕ .

ܕܕܕ , ܕܕܕ , ܕܕܕ .

ܕܕܕ , ܕܕܕ , ܕܕܕ , ܕܕܕ .

* ܕܕܕܕ , ܕܕܕܕ , ܕܕܕܕ , ܕܕܕܕ , ܕܕܕܕ , ܕܕܕܕ .

ܕܕܕܕ , ܕܕܕܕ , ܕܕܕܕ , ܕܕܕܕ .



Vocabulary:

B (Beth) - In
 Brona - Son, child, boy
 Buma - Owl
 Kaka - Tooth
 Kalba - Dog
 Karma - Vineyard,
 orchard
 Kimma - Mouth
 Kinnara - Harp
 Koma - Black

Lushana - Tongue, language
 Malka - King
 Nimra - Tiger
 Nura - Fire
 Roma - Hill, height
 Shamasha = Deacon, servant in the
 church
 Shimma - Name, noun
 Shimsha - Sun
 Shlama - Peace, hello



LESSON NINE

Letters with different shapes: Three letters in the Chaldean alphabet require a different shape if positioned at the end of the word: Kap, Mym, & Nun (ⲕ ⲙ ⲛ).
 The following is the shape of each one at the end of a word:

	Disconnected	Connected
(Final Kap) »	ⲕ	ⲕⲓ
(Final Mym) »	ⲙ	ⲙⲓ
(Final Nun) »	ⲛ	ⲛⲓ

Examples:

ⲛⲓⲕⲓⲛⲓ, ⲛⲓⲕⲓⲛⲓ, ⲛⲓⲕⲓⲛⲓ, ⲛⲓⲕⲓⲛⲓ, ⲛⲓⲕⲓⲛⲓ

* Taw & Alap: The combination of these two characters results in the following character at the end of a word: ⲛⲓ

Silent Letters: In the case that a letter is written but not pronounced, a single slash (mbatlana) is written above it to indicate that that letter is silent.

Examples:

ⲛⲓⲕⲓⲛⲓ, ⲛⲓⲕⲓⲛⲓ, ⲛⲓⲕⲓⲛⲓ

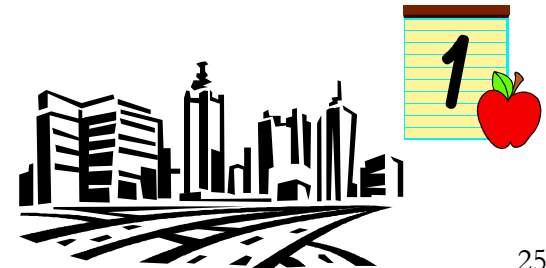
Syame: This simple sign is placed over the shortest letter or Resh to indicate a plural.

Examples:

ⲛⲓⲕⲓⲛⲓ, ⲛⲓⲕⲓⲛⲓ, ⲛⲓⲕⲓⲛⲓ

Vocabulary:

Gabbara - Mighty
 Kha - One
 M-dhyta - City
 Nasha - Man, person



Homework Exercise:

Fill in the blank by choosing the appropriate word from the vocabulary list on the left.

Vocabulary List

ⲕⲓⲛⲓ
 ⲕⲓⲛⲓ
 ⲕⲓⲛⲓ
 ⲕⲓⲛⲓ
 ⲕⲓⲛⲓ

1. ⲕⲓⲛⲓ _____
2. _____ ⲕⲓⲛⲓ
3. _____ ⲕⲓⲛⲓ
4. _____ ⲕⲓⲛⲓ
5. _____ ⲕⲓⲛⲓ

Additional Consonants: Four more consonants could be produced by the addition of this special mark (ء), to be positioned under the letter or above it. The letters which accept this kind of modification are:

Beth → Ve = **بٲ** (ٲ)

Gamal → Je = **جٲ** (ٲ)

Teth → The = **ثٲ** (ٲ)

Kap → Che = **كٲ** (ٲ)



Examples:

تٲبفه تخٲبٲهٲ، لٲلٲ صٲبٲهٲ، لٲبٲ دٲلصٲهٲ،
قٲٲهٲ دٲلٲلٲ، حٲبٲبٲ، حٲبٲٲهٲ.

Vocabulary:

Chu mindy, chu nasha - Nothing, no man (nobody)

Julli - Clothes

Jwyni - Group

M-nuqshe - Ornated

Parcha - Piece

Talmydhi - Students, disciples



Homework Exercise:

Below, write each of the four consonants with one or two examples of each.

- | | | | | |
|-------|-------|---|-------|----|
| _____ | _____ | ← | _____ | .1 |
| _____ | _____ | ← | _____ | .2 |
| _____ | _____ | ← | _____ | .3 |
| _____ | _____ | ← | _____ | .4 |

LESSON THREE

In this lesson, we will proceed with three more consonants from the Chaldean alphabet, and simultaneously exercise with increased vocabulary. The three new consonants are: Gamal, Taw & Waw.

10- دٲ دٲ ، كٲ كٲ ، لٲ لٲ ، جٲ جٲ ،

لٲ لٲ ، لٲ لٲ ، لٲ لٲ .

لٲبٲ، لٲمٲلٲ، لٲٲهٲ، لٲٲهٲ.

11- هٲ هٲ ، هٲ هٲ ، هٲ هٲ ، هٲ هٲ ، هٲ هٲ ، هٲ هٲ ،

هٲ هٲ .

هٲٲهٲ، هٲٲهٲ، لٲٲهٲ، لٲٲهٲ، هٲٲهٲ.

12- هٲ هٲ ، هٲ هٲ ، هٲ هٲ ، هٲ هٲ ، هٲ هٲ ، هٲ هٲ ،

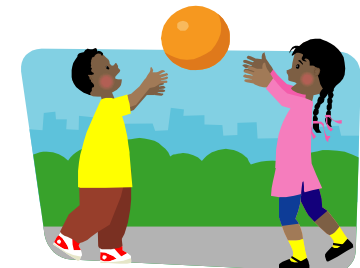
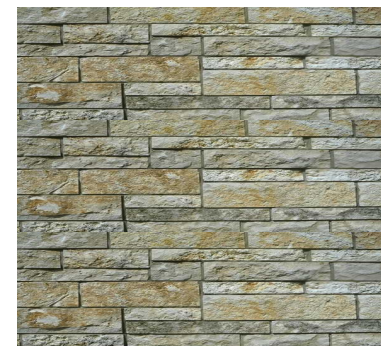
هٲ هٲ .

هٲٲهٲ، هٲٲهٲ، هٲٲهٲ، هٲٲهٲ، هٲٲهٲ، هٲٲهٲ.

* هٲٲهٲ، هٲٲهٲ، هٲٲهٲ، هٲٲهٲ، لٲبٲ، لٲٲهٲ،

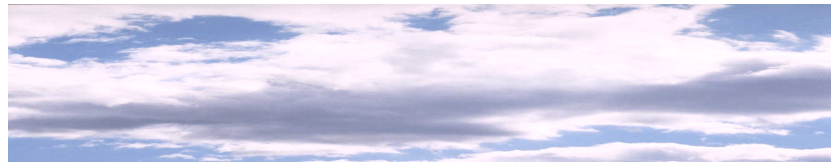
هٲٲهٲ، هٲٲهٲ، هٲٲهٲ، هٲٲهٲ، هٲٲهٲ، هٲٲهٲ.

لٲٲهٲ، هٲٲهٲ.



Vocabulary:

- Bakhta - Woman, wife
- Betha - House
- Brykha - Blessed
- Ganawa - Thief
- Gawra - Man, husband
- G-dhadha - Thread
- Gh-lyqa - Closed
- Gyana - Soul
- Kirya - Short
- K-thawa Qad-dysha - Holy Book, Bible
- Nakhopta - Chaste, shy
- Nqydha - Thin
- Paghra - Body
- Ph-hama - Understanding
- Q-phyla - Locked
- Qraya - Reading
- Rqadha - Dancing
- Sanduqa - Box
- Saphori - Traveling
- Sh-ghysha - Troubled
- Sh-mayya - Sky, heaven
- Spytha - Clear, clean, pure
- Tawa - Good
- Wadha - Act
- Yarykha - Long
- Zawna - Time
- Zmara - Singing



LESSON FOUR

In this lesson, two more consonants and one vowel are presented to you together with additional vocabulary. The two consonants are: Yodh & Teth: the vowel is the Silent Yodh.

13 - ي ي ي ، ث ث ث ، ح ح ح ،

ه ه ه ، ه ه ه .

هتت ، هتت ، هتت ، هتت ، هتت ، هتت ، هتت ، هتت ،

هتت ، هتت ، هتت .

- ي ي ي

ييت ، ييت ، ييت ، ييت ، ييت ، ييت ، ييت ، ييت ،

14 - ه ه ه ، ه ه ه ، ه ه ه ، ه ه ه ، ه ه ه ، ه ه ه ،

ه ه ه ، ه ه ه ، ه ه ه .

هتت ، هتت ، هتت ، هتت ، هتت ، هتت .

* ييتت ، ييتت ، ييتت ، ييتت ، ييتت ، ييتت ، ييتت ، ييتت ،

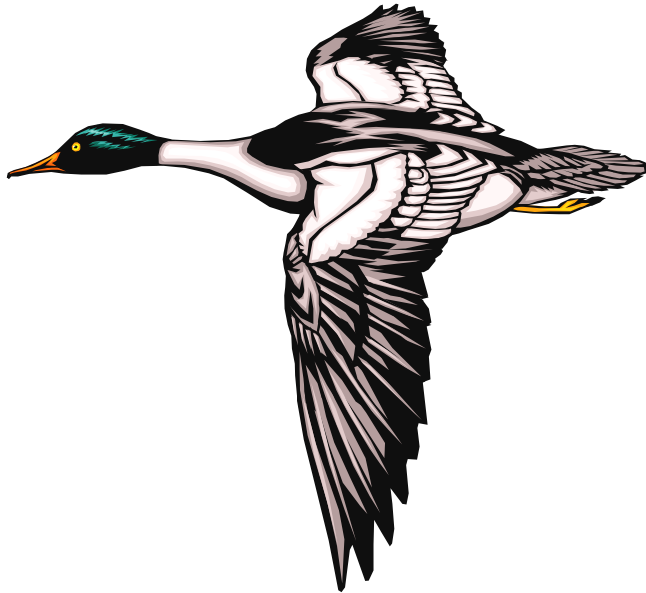
هتتت ، هتتت ، هتتت ، هتتت ، هتتت ، هتتت ، هتتت ، هتتت ،

هتتت ، هتتت ، هتتت ، هتتت ، هتتت ، هتتت ، هتتت ، هتتت .



Vocabulary:

Amyra - Prince	Raby - Teacher, professor
Balaya - Calamity, catastrophe	Taly - For me
Barayi - Outside	Tura - Mountain
Batta - Duck	Tyma - Value
Dunyi - World	Tyna - Mud
Dyka - Rooster	W (Waw) - And
Gawayi - Inside	Yama - Sea
Kaldaya - Chaldean	Yimma - Mother
Klyla - Crown	'Ylana - Tree
Lyri - Coins	Yoma - Day
Mar Tyma - Valuable	Yona - Dove
Maya - Water	



LESSON EIGHT

The Modifiable Letters: Six letters in the Chaldean alphabet accept modification, by the addition of a dot or a semi circle under the letter, in order to produce six new consonants. We will introduce them one by one.

-1 - 𐤁 ← 𐤀 : (The Beth becomes Waw)

𐤀𐤀𐤀 𐤀𐤀𐤀, 𐤀𐤀𐤀 𐤀𐤀𐤀, 𐤀𐤀𐤀 𐤀𐤀𐤀.

-2 - 𐤁 ← 𐤁 : (The Gamal becomes Ghamal)

𐤁𐤁𐤁 𐤁𐤁𐤁, 𐤁𐤁𐤁 𐤁𐤁𐤁, 𐤁𐤁𐤁 𐤁𐤁𐤁.

-3 - 𐤃 ← 𐤃 : (The Dalath becomes Dhalath)

𐤃𐤃𐤃 𐤃𐤃𐤃, 𐤃𐤃𐤃 𐤃𐤃𐤃, 𐤃𐤃𐤃 𐤃𐤃𐤃.

-4 - 𐤄 ← 𐤄 : (The Kap becomes Khap)

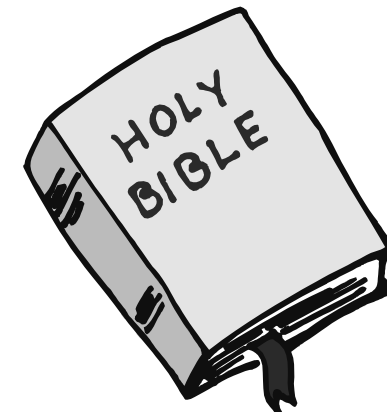
𐤄𐤄𐤄 𐤄𐤄𐤄, 𐤄𐤄𐤄 𐤄𐤄𐤄, 𐤄𐤄𐤄 𐤄𐤄𐤄.

-5 - 𐤅 ← 𐤅 : (The Pe becomes Phe)

𐤅𐤅𐤅 𐤅𐤅𐤅, 𐤅𐤅𐤅 𐤅𐤅𐤅, 𐤅𐤅𐤅 𐤅𐤅𐤅.

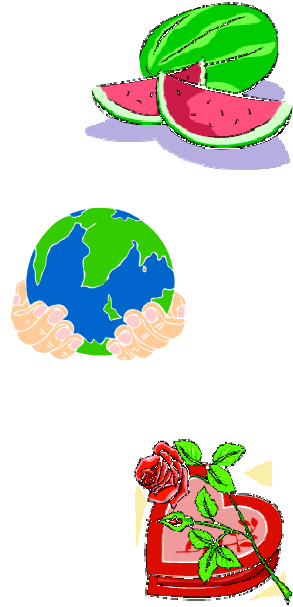
-6 - 𐤆 ← 𐤆 : (The Taw becomes Thaw)

𐤆𐤆𐤆 𐤆𐤆𐤆, 𐤆𐤆𐤆 𐤆𐤆𐤆, 𐤆𐤆𐤆 𐤆𐤆𐤆.



Vocabulary:

- 'Alma - World
- 'Amuqa, 'Amuqta - Deep
- Habbaba - Dearest
- Haluya - Sweet
- Hammam, Hammami - Bathroom, bathrooms
- Hubba - Love
- 'Ilya - High
- Maraqqa - Gravy
- Rahme - Mercy
- Rizza - Rice
- Shammama - Loveliest
- Shamzyya - Watermelon
- Shapyra, Shapyrta - Pretty (m/f)
- 'Umra - Age



Homework Exercise:

Below, write each vocabulary word in Chaldean twice along with its meaning.

_____	=	_____	_____	.1
_____	=	_____	_____	.2
_____	=	_____	_____	.3
_____	=	_____	_____	.4
_____	=	_____	_____	.5
_____	=	_____	_____	.6
_____	=	_____	_____	.7
_____	=	_____	_____	.8
_____	=	_____	_____	.9
_____	=	_____	_____	.10
_____	=	_____	_____	.11
_____	=	_____	_____	.12
_____	=	_____	_____	.13
_____	=	_____	_____	.14
_____	=	_____	_____	.15
_____	=	_____	_____	.16
_____	=	_____	_____	.17
_____	=	_____	_____	.18
_____	=	_____	_____	.19
_____	=	_____	_____	.20
_____	=	_____	_____	.21
_____	=	_____	_____	.22
_____	=	_____	_____	.23

Homework Exercise:

Match the following two columns by drawing lines to connect the appropriate word with its meaning.

B	A
LOVE	ܕܠܘܒܐ
HIGH	ܕܥܘܩܒܐ
LOVELIEST	ܕܥܘܩܒܐ
WORLD	ܕܝܠܡܐ
WATERMELON	ܕܥܘܩܒܐ

